

Anti-ARL6IP1 antibody

Cat. No.	ml221702
Package	25 µl/100 µl/200 µl
Storage	-20°C, pH7.4 PBS, 0.05% NaN ₃ , 40% Glycerol

Product overview

Description	Anti-ARL6IP1 rabbit polyclonal antibody
Applications	ELISA, IHC
Immunogen	Fusion protein of human ARL6IP1
Reactivity	Human, Mouse
Content	0.4 mg/ml
Host species	Rabbit
Ig class	Immunogen-specific rabbit IgG
Purification	Antigen affinity purification

Target information

Symbol	ARL6IP1
Full name	ADP-ribosylation factor-like 6 interacting protein 1
Synonyms	AIP1; ARMER; ARL6IP
Swissprot	Q15041

Target Background

ARMER (apoptotic regulator in the membrane of the endoplasmic reticulum), also known as ADP-ribosylation-like factor 6-interacting protein 1 (ARL6IP1 or AIP1), is a multi-pass membrane protein that belongs to the Ras superfamily. It is expressed in brain, thymus, lung, bone marrow and, to a lesser extent, in spleen, kidney and liver. ARMER is not found in the heart and is found predominantly in early myeloid progenitor cells localizing to the intracytoplasmic membranes. It interacts with ARL6, inhibits caspase-9 activity by inhibiting proteolysis of downstream substrates (including LEHD-AFC, vimentin and caspase-3) and is down-regulated during myeloid differentiation. ARMER may play a role in membrane trafficking, protein transport or cell signaling during hematopoietic maturation.

订购热线: 4008-898-798

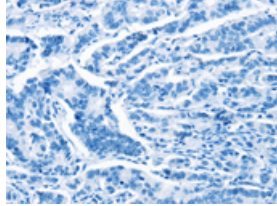
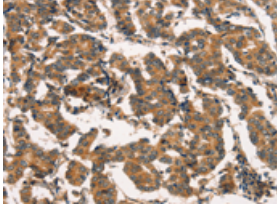
Applications

Immunohistochemistry

Predicted cell location: Cytoplasm

Positive control: Human breast cancer

Recommended dilution: 25-100

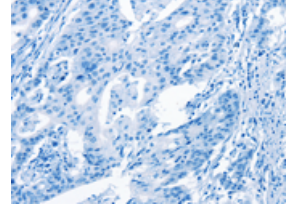
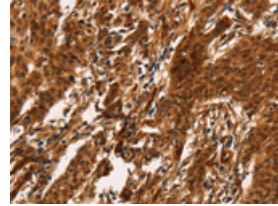


The image on the left is immunohistochemistry of paraffin-embedded Human breast cancer tissue using ml221702(ARL6IP1 Antibody) at dilution 1/20, on the right is treated with fusion protein. (Original magnification: $\times 200$)

Predicted cell location: Cytoplasm

Positive control: Human gastric cancer

Recommended dilution: 25-100



The image on the left is immunohistochemistry of paraffin-embedded Human gastric cancer tissue using ml221702(ARL6IP1 Antibody) at dilution 1/20, on the right is treated with fusion protein. (Original magnification: $\times 200$)

ELISA

Recommended dilution: 1000-2000

联系电话: 4008-898-798, 021-61725725

联系QQ: 2881505695, 2881505696

邮箱: mlbio_cn@yeah.net

网址: www.mlbio.cn