

Anti-USP35 antibody

Cat. No.	ml224192
Package	25 µl/100 µl/200 µl
Storage	-20°C, pH7.4 PBS, 0.05% NaN ₃ , 40% Glycerol

Product overview

Description	Anti-USP35 rabbit polyclonal antibody
Applications	ELISA, IHC
Immunogen	Fusion protein of human USP35
Reactivity	Human
Content	0.4 mg/ml
Host species	Rabbit
Ig class	Immunogen-specific rabbit IgG
Purification	Antigen affinity purification

Target information

Symbol	USP35
Full name	ubiquitin specific peptidase 35
Synonyms	
Swissprot	Q9P2H5

Target Background

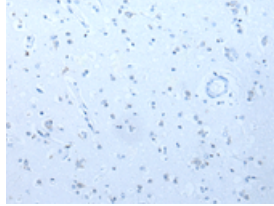
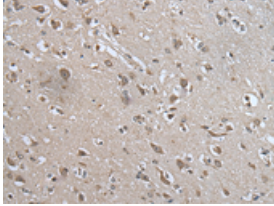
USP35 (ubiquitin specific peptidase 35) is a 1,017 amino acid protein that belongs to the peptidase C19 family. Expressed in pancreas, testis and skeletal muscle, USP35 functions to catalyze the conversion of a ubiquitin C-terminal thioester and water to free ubiquitin and a thiol, a reaction that may play a role in signaling events throughout the cell.

订购热线: 4008-898-798

Applications

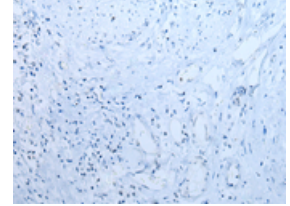
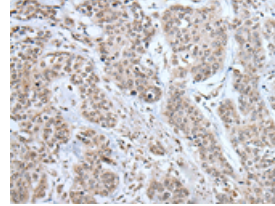
Immunohistochemistry

Predicted cell location: Nucleus and Cytoplasm
Positive control: Human brain
Recommended dilution: 20-100



The image on the left is immunohistochemistry of paraffin-embedded Human brain tissue using ml224192(USP35 Antibody) at dilution 1/30, on the right is treated with fusion protein. (Original magnification: ×200)

Predicted cell location: Nucleus and Cytoplasm
Positive control: Human prostate cancer
Recommended dilution: 20-100



The image on the left is immunohistochemistry of paraffin-embedded Human prostate cancer tissue using ml224192(USP35 Antibody) at dilution 1/30, on the right is treated with fusion protein. (Original magnification: ×200)

ELISA

Recommended dilution: 5000-10000

联系电话: 4008-898-798, 021-61725725

联系QQ: 2881505695, 2881505696

邮箱: mlbio_cn@yeah.net

网址: www.mlbio.cn