

Anti-SAMD4B antibody

Cat. No. ml262153
Package 25 µl/100 µl/200 µl
Storage -20°C, pH7.4 PBS, 0.05% NaN₃, 40% Glycerol

Product overview

Description Anti-SAMD4B rabbit polyclonal antibody
Applications ELISA, IHC
Immunogen Synthetic peptide of human SAMD4B
Reactivity Human, Mouse
Content 0.9 mg/ml
Host species Rabbit
Ig class Immunogen-specific rabbit IgG
Purification Antigen affinity purification

Target information

Symbol SAMD4B
Full name sterile alpha motif domain containing 4B
Synonyms SMGB; hSmaug2
Swissprot Q5PRF9

Target Background

SMGB; hSmaug2

订购热线: 4008-898-798

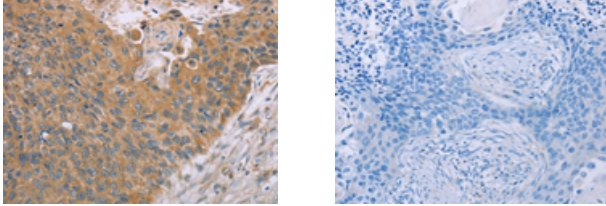
Applications

Immunohistochemistry

Predicted cell location: Cytoplasm

Positive control: Human esophagus cancer

Recommended dilution: 25-100



The image on the left is immunohistochemistry of paraffin-embedded Human esophagus cancer tissue using ml262153(SAMD4B Antibody) at dilution 1/40, on the right is treated with synthetic peptide. (Original magnification: ×200)

ELISA

Recommended dilution: 1000-2000

联系电话: 4008-898-798, 021-61725725

联系QQ: 2881505695, 2881505696

邮箱: mlbio_cn@yeah.net

网址: www.mlbio.cn