

Anti-COX6B1 antibody

Cat. No.	ml120116
Package	25 µl/100 µl/200 µl
Storage	-20°C, pH7.4 PBS, 0.05% NaN ₃ , 40% Glycerol

Product overview

Description	Anti-COX6B1 rabbit polyclonal antibody
Applications	ELISA, WB, IHC
Immunogen	Full length fusion protein
Reactivity	Human, Mouse
Content	0.6 mg/ml
Host species	Rabbit
Ig class	Immunogen-specific rabbit IgG
Purification	Antigen affinity purification

Target information

Symbol	COX6B1
Full name	Cytochrome c oxidase subunit VIb polypeptide 1 (ubiquitous)
Synonyms	COXG, COX6B, COXVIb1
Swissprot	P14854

Target Background

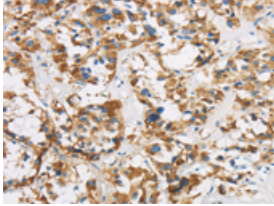
Cytochrome c oxidase (COX), the terminal enzyme of the mitochondrial respiratory chain, catalyzes the electron transfer from reduced cytochrome c to oxygen. It is a heteromeric complex consisting of 3 catalytic subunits encoded by mitochondrial genes and multiple structural subunits encoded by nuclear genes. The mitochondrially-encoded subunits function in electron transfer, and the nuclear-encoded subunits may be involved in the regulation and assembly of the complex. This nuclear gene encodes subunit VIb. Mutations in this gene are associated with severe infantile encephalomyopathy. Three pseudogenes COX6BP-1, COX6BP-2 and COX6BP-3 have been found on chromosomes 7, 17 and 22q13.1-13.2, respectively.

订购热线: 4008-898-798

Applications

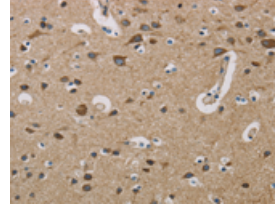
Immunohistochemistry

Predicted cell location: Cytoplasm
Positive control: Human thyroid cancer
Recommended dilution: 50-200



The image is immunohistochemistry of paraffin-embedded Human thyroid cancer tissue using ml120116(COX6B1 Antibody) at dilution 1/50. (Original magnification: ×200)

Predicted cell location: Cytoplasm
Positive control: Human brain
Recommended dilution: 50-200



The image is immunohistochemistry of paraffin-embedded Human brain tissue using ml120116(COX6B1 Antibody) at dilution 1/50. (Original magnification: ×200)

Western blotting

Predicted band size: 10 kDa
Positive control: Human fetal liver tissue
Recommended dilution: 1000-5000

Gel: 10% SDS-PAGE

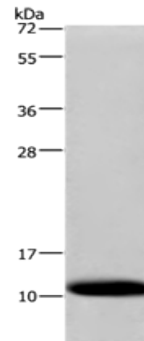
Lysate: 40 µg

Lane: Human fetal liver tissue

Primary antibody: ml120116(COX6B1 Antibody) at dilution 1/1200

Secondary antibody: Goat anti rabbit IgG at 1/8000 dilution

Exposure time: 1 minute



ELISA

Recommended dilution: 2000-10000

联系电话: 4008-898-798, 021-61725725

联系QQ: 2881505695, 2881505696

邮箱: mlbio_cn@yeah.net

网址: www.mlbio.cn