

Anti-BID antibody

Cat. No.	ml120312
Package	25 µl/100 µl/200 µl
Storage	-20°C, pH7.4 PBS, 0.05% NaN ₃ , 40% Glycerol

Product overview

Description	Anti-BID rabbit polyclonal antibody
Applications	ELISA, WB, IHC
Immunogen	Fusion protein of human BID
Reactivity	Human
Content	0.4 mg/ml
Host species	Rabbit
Ig class	Immunogen-specific rabbit IgG
Purification	Antigen affinity purification

Target information

Symbol	BID
Full name	BH3-interacting domain death agonist
Synonyms	FP497
Swissprot	P55957

Target Background

This gene encodes a death agonist that heterodimerizes with either agonist BAX or antagonist BCL2. The encoded protein is a member of the BCL-2 family of cell death regulators. It is a mediator of mitochondrial damage induced by caspase-8 (CASP8); CASP8 cleaves this encoded protein, and the COOH-terminal part translocates to mitochondria where it triggers cytochrome c release. Multiple alternatively spliced transcript variants have been found, but the full-length nature of some variants has not been defined.

订购热线: 4008-898-798

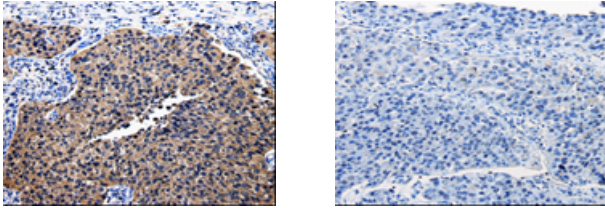
Applications

Immunohistochemistry

Predicted cell location: Cytoplasm, Cell membrane

Positive control: Human renal cancer

Recommended dilution: 25-100



The image on the left is immunohistochemistry of paraffin-embedded Human renal cancer tissue using ml120312(BID Antibody) at dilution 1/25, on the right is treated with fusion protein. (Original magnification: $\times 200$)

Western blotting

Predicted band size: 22 kDa

Positive control: Human fetal brain and liver tissue, HT-29 and HepG2 cells

Recommended dilution: 200-2000

Gel: 12% SDS-PAGE

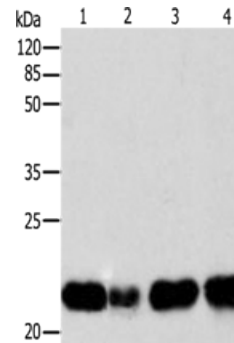
Lysate: 30 μ g

Lane 1-4: Human fetal brain tissue, Human liver tissue, HT29 cells, HepG2 cells

Primary antibody: ml120312(BID Antibody) at dilution 1/260

Secondary antibody: Goat anti rabbit IgG at 1/8000 dilution

Exposure time: 10 seconds



ELISA

Recommended dilution: 1000-5000

联系电话: 4008-898-798, 021-61725725

联系QQ: 2881505695, 2881505696

邮箱: mlbio_cn@yeah.net

网址: www.mlbio.cn