

Anti-ATMIN antibody

Cat. No.	ml125475
Package	25 µl/100 µl/200 µl
Storage	-20°C, pH7.4 PBS, 0.05% NaN ₃ , 40% Glycerol

Product overview

Description	Anti-ATMIN rabbit polyclonal antibody
Applications	ELISA, WB
Immunogen	Fusion protein of human ATMIN
Reactivity	Human, Mouse
Content	1.2 mg/ml
Host species	Rabbit
Ig class	Immunogen-specific rabbit IgG
Purification	Antigen affinity purification

Target information

Symbol	ATMIN
Full name	ATM interactor
Synonyms	ASCIZ; ZNF822
Swissprot	O43313

Target Background

Transcription factor. Plays a crucial role in cell survival and RAD51 foci formation in response to methylating DNA damage. Involved in regulating the activity of ATM in the absence of DNA damage. May play a role in stabilizing ATM. Binds to the DYNLL1 promoter and activates its transcription.

订购热线: 4008-898-798

Applications

Western blotting

Predicted band size:88 kDa

Positive control:293T, Hela, HepG2, 231 and TM4 cell lysates

Recommended dilution: 500-2000

Gel: 8%SDS-PAGE

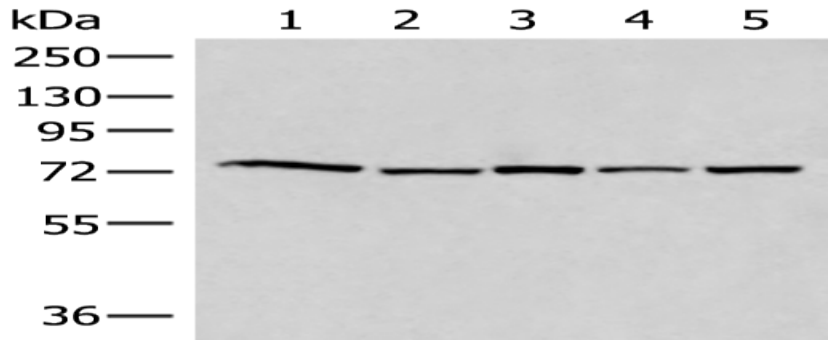
Lysate: 40 µg

Lane 1-5: 293T, Hela, HepG2, 231 and
TM4 cell lysates

Primary antibody: ml125475(ATMIN
Antibody) at dilution 1/500

Secondary antibody: Goat anti rabbit
IgG at 1/8000 dilution

Exposure time: 40 seconds



ELISA

Recommended dilution:5000-10000

联系电话: 4008-898-798, 021-61725725

联系QQ: 2881505695, 2881505696

邮箱: mlbio_cn@yeah.net

网址: www.mlbio.cn