

Anti-TPD52L1 antibody

Cat. No.	ml162398
Package	25 µl/100 µl/200 µl
Storage	-20°C, pH7.4 PBS, 0.05% NaN ₃ , 40% Glycerol

Product overview

Description	Anti-TPD52L1 rabbit polyclonal antibody
Applications	ELISA, WB
Immunogen	Synthetic peptide of human TPD52L1
Reactivity	Human
Content	0.9 mg/ml
Host species	Rabbit
Ig class	Immunogen-specific rabbit IgG
Purification	Antigen affinity purification

Target information

Symbol	TPD52L1
Full name	tumor protein D52-like 1
Synonyms	D53; hD53
Swissprot	Q16890

Target Background

This gene encodes a member of the tumor protein D52 (TPD52) family. The encoded protein contains a coiled-coil domain and may form homo- or hetero-dimer with TPD52 family members. The protein is reported to be involved in cell proliferation and calcium signaling. It also interacts with the mitogen-activated protein kinase kinase kinase 5 (MAP3K5/ASK1) and positively regulates MAP3K5-induced apoptosis.

订购热线: 4008-898-798

Applications

Western blotting

Predicted band size:22 kDa

Positive control:293T, 231, PC3, A549 and K562 cells

Recommended dilution: 500-2000

Gel: 12%SDS-PAGE

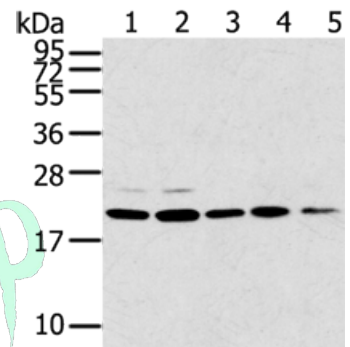
Lysate: 40 µg

Lane 1-5: 293T cells, 231 cells, PC3 cells, A549 cells, K562 cells

Primary antibody: ml162398(TPD52L1 Antibody) at dilution 1/300

Secondary antibody: Goat anti rabbit IgG at 1/8000 dilution

Exposure time: 10 seconds



ELISA

Recommended dilution:2000-5000

联系电话: 4008-898-798, 021-61725725

联系QQ: 2881505695, 2881505696

邮箱: mlbio_cn@yeah.net

网址: www.mlbio.cn