

Anti-CNTFR antibody

Cat. No.	ml220449
Package	25 µl/100 µl/200 µl
Storage	-20°C, pH7.4 PBS, 0.05% NaN ₃ , 40% Glycerol

Product overview

Description	Anti-CNTFR rabbit polyclonal antibody
Applications	ELISA, WB, IHC
Immunogen	Fusion protein of human CNTFR
Reactivity	Human, Mouse, Rat
Content	0.3 mg/ml
Host species	Rabbit
Ig class	Immunogen-specific rabbit IgG
Purification	Antigen affinity purification

Target information

Symbol	CNTFR
Full name	ciliary neurotrophic factor receptor

Synonyms

Swissprot P26992

Target Background

This gene encodes a member of the type 1 cytokine receptor family. The encoded protein is the ligand-specific component of a tripartite receptor for ciliary neurotrophic factor, which plays a critical role in neuronal cell survival, differentiation and gene expression. Binding of ciliary neurotrophic factor to the encoded protein recruits the transmembrane components of the receptor, gp130 and leukemia inhibitory factor receptor, facilitating signal transduction.

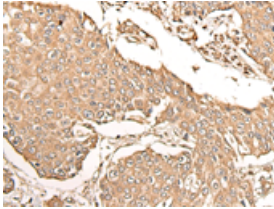
Applications

Immunohistochemistry

Predicted cell location: Cytoplasm

Positive control: Human prostate cancer

Recommended dilution: 25-100



The image is immunohistochemistry of paraffin-embedded Human prostate cancer tissue using ml220449(CNTFR Antibody) at dilution 1/30. (Original magnification: ×200)

Western blotting

Predicted band size: 41 kDa

Positive control: Human fetal muscle tissue lysate

Recommended dilution: 200-1000

Gel: 8%SDS-PAGE

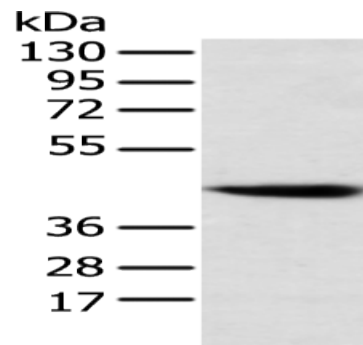
Lysate: 40 μg

Lane: Human fetal muscle tissue lysate

Primary antibody: ml220449(CNTFR Antibody) at dilution 1/200

Secondary antibody: Goat anti rabbit IgG at 1/8000 dilution

Exposure time: 2 minutes



mlbio 酶联生物
Good elisakit producers
订购热线: 4008-898-798

ELISA

Recommended dilution: 5000-10000

联系电话: 4008-898-798, 021-61725725

联系QQ: 2881505695, 2881505696

邮箱: mlbio_cn@yeah.net

网址: www.mlbio.cn