

Anti-CAPRIN1 antibody

Cat. No.	ml221882
Package	25 µl/100 µl/200 µl
Storage	-20°C, pH7.4 PBS, 0.05% NaN ₃ , 40% Glycerol

Product overview

Description	Anti-CAPRIN1 rabbit polyclonal antibody
Applications	ELISA, WB
Immunogen	Fusion protein of human CAPRIN1
Reactivity	Human, Mouse, Rat
Content	0.2 mg/ml
Host species	Rabbit
Ig class	Immunogen-specific rabbit IgG
Purification	Antigen affinity purification

Target information

Symbol	CAPRIN1
Full name	cell cycle associated protein 1
Synonyms	M11S1; GPIAP1; RNG105; GPIP137; p137GPI
Swissprot	Q14444

Target Background

Caprin-1 is a protein that in humans is encoded by the CAPRIN1 gene. May regulate the transport and translation of mRNAs of proteins involved in synaptic plasticity in neurons and cell proliferation and migration in multiple cell types. May form homomultimers. Directly interacts with G3BP1 in cytoplasmic RNA granules. Binds directly and selectively to MYC and CCND2 RNAs. In neuronal cells, directly binds to several mRNAs associated with RNA granules, including BDNF, CAMK2A, CREB1, MAP2, NTRK2 mRNAs, as well as to GRIN1 and KPNB1 mRNAs, but not to rRNAs.

订购热线: 4008-898-798

Applications

Western blotting

Predicted band size:78 kDa

Positive control:K562 and hela cells

Recommended dilution: 200-1000

Gel: 10%SDS-PAGE

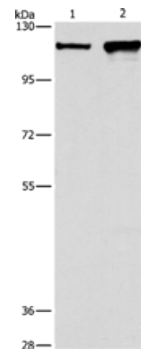
Lysate: 40 µg

Lane 1-2: K562 cells, hela cells

Primary antibody: ml221882(CAPRIN1 Antibody) at dilution 1/250

Secondary antibody: Goat anti rabbit IgG at 1/8000 dilution

Exposure time: 20 seconds



ELISA

Recommended dilution:1000-2000

联系电话: 4008-898-798, 021-61725725

联系QQ: 2881505695, 2881505696

邮箱: mlbio_cn@yeah.net

网址: www.mlbio.cn