

## Anti-GJD2 antibody

<b>Cat. No.</b>	ml260217
<b>Package</b>	25 µl/100 µl/200 µl
<b>Storage</b>	-20°C, pH7.4 PBS, 0.05% NaN <sub>3</sub> , 40% Glycerol

### Product overview

<b>Description</b>	Anti-GJD2 rabbit polyclonal antibody
<b>Applications</b>	ELISA, WB
<b>Immunogen</b>	Synthetic peptide of human GJD2
<b>Reactivity</b>	Human, Mouse, Rat
<b>Content</b>	0.2 mg/ml
<b>Host species</b>	Rabbit
<b>Ig class</b>	Immunogen-specific rabbit IgG
<b>Purification</b>	Antigen affinity purification

### Target information

<b>Symbol</b>	GJD2
<b>Full name</b>	gap junction protein, delta 2, 36kDa
<b>Synonyms</b>	CX36, GJA9
<b>Swissprot</b>	Q9UKL4

### Target Background

This gene encodes a member of the connexin protein family. Connexins are gap junction proteins which are arranged in groups of 6 around a central pore to form a connexon, a component of the gap junction intercellular channel. The channels formed by this protein allow cationic molecule exchange between human beta cells and may function in the regulation of insulin secretion.

订购热线: 4008-898-798

**Applications**

**Western blotting**

Predicted band size:36 kDa

Positive control:Human fetal brain tissue

Recommended dilution: 200-1000

Gel: 10%SDS-PAGE

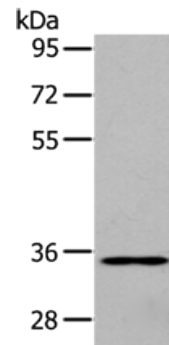
Lysate: 30  $\mu$ g

Lane: Human fetal brain tissue

Primary antibody: ml260217(GJD2 Antibody) at dilution 1/250

Secondary antibody: Goat anti rabbit IgG at 1/8000 dilution

Exposure time: 5 minutes



**ELISA**

Recommended dilution:1000-5000

联系电话: 4008-898-798, 021-61725725

联系QQ: 2881505695, 2881505696

邮箱: mlbio\_cn@yeah.net

网址: www.mlbio.cn