

Anti-APOL2 antibody

Cat. No.	ml261292
Package	25 µl/100 µl/200 µl
Storage	-20°C, pH7.4 PBS, 0.05% NaN ₃ , 40% Glycerol

Product overview

Description	Anti-APOL2 rabbit polyclonal antibody
Applications	ELISA, WB, IHC
Immunogen	Synthetic peptide of human APOL2
Reactivity	Human
Content	0.4 mg/ml
Host species	Rabbit
Ig class	Immunogen-specific rabbit IgG
Purification	Antigen affinity purification

Target information

Symbol	APOL2
Full name	apolipoprotein L, 2

Synonyms APOL3; APOL-II

Swissprot Q9BQE5

Target Background

This gene is a member of the apolipoprotein L gene family. The encoded protein is found in the cytoplasm, where it may affect the movement of lipids or allow the binding of lipids to organelles. Two transcript variants encoding the same protein have been found for this gene.

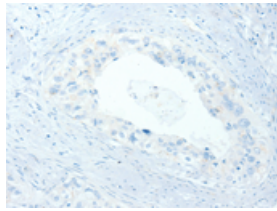
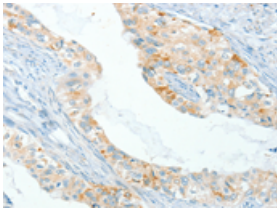
Applications

Immunohistochemistry

Predicted cell location: Cytoplasm

Positive control: Human cervical cancer

Recommended dilution: 100-300

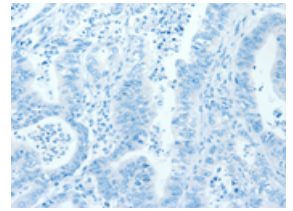
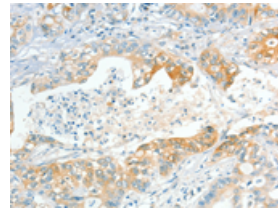


The image on the left is immunohistochemistry of paraffin-embedded Human cervical cancer tissue using ml261292(APOL2 Antibody) at dilution 1/80, on the right is treated with synthetic peptide. (Original magnification: $\times 200$)

Predicted cell location: Cytoplasm

Positive control: Human gastric cancer

Recommended dilution: 100-300



The image on the left is immunohistochemistry of paraffin-embedded Human gastric cancer tissue using ml261292(APOL2 Antibody) at dilution 1/80, on the right is treated with synthetic peptide. (Original magnification: $\times 200$)

Western blotting

Predicted band size: 37 kDa

Positive control: Human fetal liver tissue and huvec cells

Recommended dilution: 500-2000

订购热线: 4008-898-798

Gel: 10%SDS-PAGE

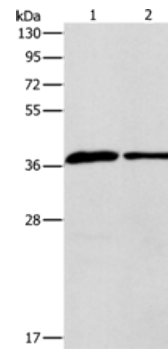
Lysate: 40 μ g

Lane 1-2: Human fetal liver tissue, huvec cells

Primary antibody: ml261292(APOL2 Antibody) at dilution 1/725

Secondary antibody: Goat anti rabbit IgG at 1/8000 dilution

Exposure time: 40 seconds



ELISA

Recommended dilution: 2000-10000

联系电话: 4008-898-798, 021-61725725

联系QQ: 2881505695, 2881505696

邮箱: mlbio_cn@yeah.net

网址: www.mlbio.cn