

## Anti-APOBEC2 antibody

<b>Cat. No.</b>	ml261294
<b>Package</b>	25 µl/100 µl/200 µl
<b>Storage</b>	-20°C, pH7.4 PBS, 0.05% NaN <sub>3</sub> , 40% Glycerol

### Product overview

<b>Description</b>	Anti-APOBEC2 rabbit polyclonal antibody
<b>Applications</b>	ELISA, WB
<b>Immunogen</b>	Synthetic peptide of human APOBEC2
<b>Reactivity</b>	Human, Mouse
<b>Content</b>	0.2 mg/ml
<b>Host species</b>	Rabbit
<b>Ig class</b>	Immunogen-specific rabbit IgG
<b>Purification</b>	Antigen affinity purification

### Target information

<b>Symbol</b>	APOBEC2
<b>Full name</b>	apolipoprotein B mRNA editing enzyme, catalytic polypeptide-like 2
<b>Synonyms</b>	ARP1; ARCD1
<b>Swissprot</b>	Q9Y235

### Target Background

Apolipoprotein B mRNA editing enzyme, catalytic polypeptide-like 2 (APOBEC2) is a 224 amino acid protein that belongs to the cytidine and deoxycytidylate deaminase family. Expressed exclusively in heart and skeletal muscle, APOBEC2 is thought to be a probable C (cytidine) to U (uridine) editing enzyme. However, unlike other members of the family, such as APOBEC1, which mediates the editing of apolipoprotein (apo) B mRNA, APOBEC2 does not display any detectable apoB mRNA editing activity. Also, APOBEC2 has been shown to have low, but definite, intrinsic cytidine deaminase activity.

订购热线: 4008-898-798

#### Applications

##### Western blotting

Predicted band size: 26 kDa

Positive control: Mouse muscle and skin tissue

Recommended dilution: 200-1000

Gel: 10% SDS-PAGE

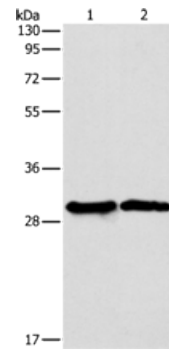
Lysate: 40 µg

Lane 1-2: Mouse muscle tissue, Mouse skin tissue

Primary antibody: ml261294 (APOBEC2 Antibody) at dilution 1/266.6

Secondary antibody: Goat anti rabbit IgG at 1/8000 dilution

Exposure time: 20 seconds



#### ELISA

Recommended dilution: 1000-2000

联系电话: 4008-898-798, 021-61725725

联系QQ: 2881505695, 2881505696

邮箱: [mlbio\\_cn@yeah.net](mailto:mlbio_cn@yeah.net)

网址: [www.mlbio.cn](http://www.mlbio.cn)