

## Anti-SEPT2 antibody

|                 |                                                         |
|-----------------|---------------------------------------------------------|
| <b>Cat. No.</b> | ml223125                                                |
| <b>Package</b>  | 25 µl/100 µl/200 µl                                     |
| <b>Storage</b>  | -20°C, pH7.4 PBS, 0.05% NaN <sub>3</sub> , 40% Glycerol |

### Product overview

|                     |                                       |
|---------------------|---------------------------------------|
| <b>Description</b>  | Anti-SEPT2 rabbit polyclonal antibody |
| <b>Applications</b> | ELISA, WB                             |
| <b>Immunogen</b>    | Full length fusion protein            |
| <b>Reactivity</b>   | Human, Mouse, Rat                     |
| <b>Content</b>      | 0.4 mg/ml                             |
| <b>Host species</b> | Rabbit                                |
| <b>Ig class</b>     | Immunogen-specific rabbit IgG         |
| <b>Purification</b> | Antigen affinity purification         |

### Target information

|                  |                                      |
|------------------|--------------------------------------|
| <b>Symbol</b>    | SEPT2                                |
| <b>Full name</b> | septin 2                             |
| <b>Synonyms</b>  | DIFF6; NEDD5; NEDD-5; Pnutl3; hNedd5 |
| <b>Swissprot</b> | Q15019                               |

### Target Background

Filament-forming cytoskeletal GTPase. Required for normal organization of the actin cytoskeleton. Plays a role in the biogenesis of polarized columnar-shaped epithelium by maintaining polyglutamylated microtubules, thus facilitating efficient vesicle transport, and by impeding MAP4 binding to tubulin. Required for the progression through mitosis.

订购热线: 4008-898-798

**Applications**

**Western blotting**

Predicted band size:41 kDa

Positive control:HepG2 cells

Recommended dilution: 200-1000

Gel: 8%SDS-PAGE

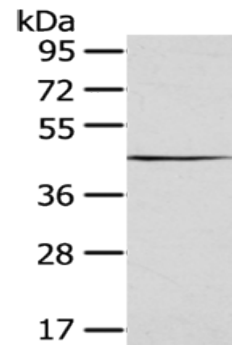
Lysate: 40 µg

Lane: HepG2 cells

Primary antibody: ml223125(SEPT2 Antibody) at dilution 1/400

Secondary antibody: Goat anti rabbit IgG at 1/8000 dilution

Exposure time: 10 seconds



**ELISA**

Recommended dilution:1000-2000

联系电话: 4008-898-798, 021-61725725

联系QQ: 2881505695, 2881505696

邮箱: mlbio\_cn@yeah.net

网址: www.mlbio.cn