

## Anti-SERPINB11 antibody

<b>Cat. No.</b>	ml223136
<b>Package</b>	25 µl/100 µl/200 µl
<b>Storage</b>	-20°C, pH7.4 PBS, 0.05% NaN <sub>3</sub> , 40% Glycerol

### Product overview

<b>Description</b>	Anti-SERPINB11 rabbit polyclonal antibody
<b>Applications</b>	ELISA, WB, IHC
<b>Immunogen</b>	Fusion protein of human SERPINB11
<b>Reactivity</b>	Human, Mouse
<b>Content</b>	0.4 mg/ml
<b>Host species</b>	Rabbit
<b>Ig class</b>	Immunogen-specific rabbit IgG
<b>Purification</b>	Antigen affinity purification

### Target information

<b>Symbol</b>	SERPINB11
<b>Full name</b>	serpin peptidase inhibitor, clade B (ovalbumin), member 11 (gene/pseudogene)

**Synonyms** EIPIN; SERPIN11

**Swissprot** Q96P15

### **Target Background**

SerpinB11 (serpin peptidase inhibitor, clade B (ovalbumin), member 11), also known as EIPIN or SERPIN11, is a 392 amino acid cytoplasmic protein that belongs to the Ov-serpin subfamily and serpin family. Like other members of the serpin family, SerpinB11 has been identified as a noninhibitory intracellular protein. The gene encoding SerpinB11 maps to human chromosome 18, which houses over 300 protein-coding genes and contains nearly 76 million bases. There are a variety of diseases associated with defects in chromosome 18-localized genes, some of which include Trisomy 18 (also known as Edwards syndrome), Niemann-Pick disease, hereditary hemorrhagic telangiectasia, erythropoietic protoporphyria and follicular lymphomas.

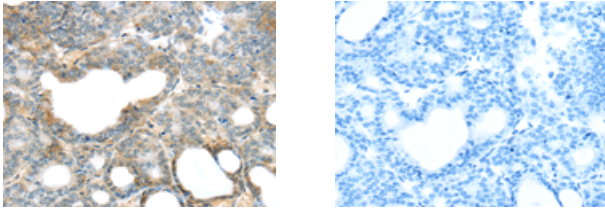
## Applications

### Immunohistochemistry

Predicted cell location: Cytoplasm

Positive control: Human thyroid cancer

Recommended dilution: 10-50



The image on the left is immunohistochemistry of paraffin-embedded Human thyroid cancer tissue using m1223136(SERPINB11 Antibody) at dilution 1/20, on the right is treated with fusion protein. (Original magnification:  $\times 200$ )

### Western blotting

Predicted band size: 44 kDa

Positive control: Mouse lung tissue

Recommended dilution: 500-2000

订购热线: 4008-898-798

Gel: 8%SDS-PAGE

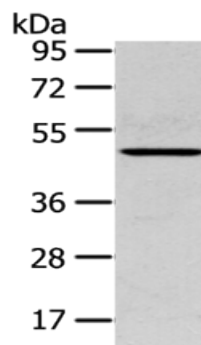
Lysate: 40  $\mu$ g

Lane: Mouse lung tissue

Primary antibody: ml223136(SERPINB11 Antibody) at dilution 1/400

Secondary antibody: Goat anti rabbit IgG at 1/8000 dilution

Exposure time: 30 seconds



#### ELISA

Recommended dilution: 2000-5000

联系电话: 4008-898-798, 021-61725725

联系QQ: 2881505695, 2881505696

邮箱: [mlbio\\_cn@yeah.net](mailto:mlbio_cn@yeah.net)

网址: [www.mlbio.cn](http://www.mlbio.cn)