

## Anti-SIAH1 antibody

<b>Cat. No.</b>	ml223147
<b>Package</b>	25 µl/100 µl/200 µl
<b>Storage</b>	-20°C, pH7.4 PBS, 0.05% NaN <sub>3</sub> , 40% Glycerol

### Product overview

<b>Description</b>	Anti-SIAH1 rabbit polyclonal antibody
<b>Applications</b>	ELISA, WB, IHC
<b>Immunogen</b>	Full length fusion protein
<b>Reactivity</b>	Human, Mouse, Rat
<b>Content</b>	0.4 mg/ml
<b>Host species</b>	Rabbit
<b>Ig class</b>	Immunogen-specific rabbit IgG
<b>Purification</b>	Antigen affinity purification

### Target information

<b>Symbol</b>	SIAH1
<b>Full name</b>	siah E3 ubiquitin protein ligase 1

**Synonyms** SIAH1A

**Swissprot** Q8IUQ4

### **Target Background**

This gene encodes a protein that is a member of the seven in absentia homolog (SIAH) family. The protein is an E3 ligase and is involved in ubiquitination and proteasome-mediated degradation of specific proteins. The activity of this ubiquitin ligase has been implicated in the development of certain forms of Parkinson's disease, the regulation of the cellular response to hypoxia and induction of apoptosis. Alternative splicing results in several additional transcript variants, some encoding different isoforms and others that have not been fully characterized.

## Applications

### Immunohistochemistry

Predicted cell location: Cytoplasm and Nucleus

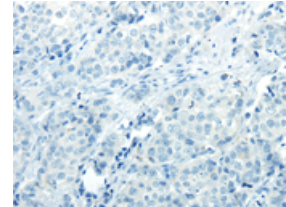
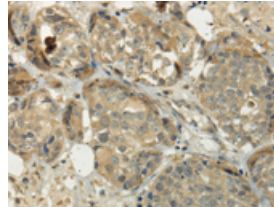
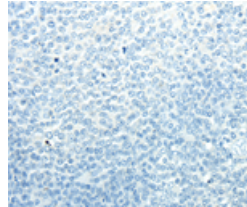
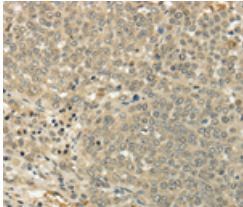
Predicted cell location: Cytoplasm and Nucleus

Positive control: Human ovarian cancer

Positive control: Human breast cancer

Recommended dilution: 25-100

Recommended dilution: 25-100



The image on the left is immunohistochemistry of paraffin-embedded Human ovarian cancer tissue using ml223147(SIAH1 Antibody) at dilution 1/35, on the right is treated with fusion protein. (Original magnification: ×200)

The image on the left is immunohistochemistry of paraffin-embedded Human breast cancer tissue using ml223147(SIAH1 Antibody) at dilution 1/35, on the right is treated with fusion protein. (Original magnification: ×200)

### Western blotting

Predicted band size:31 kDa

Positive control:Hela, Jurkat and hepg2 cell, human fetal liver tissue

Recommended dilution: 500-2000

订购热线: 4008-898-798

Gel: 12%SDS-PAGE

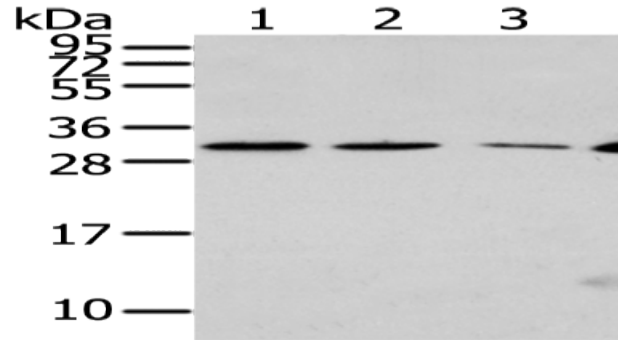
Lysate: 40  $\mu$ g

Lane 1-4: Hela, Jurkat and hepg2 cell, human fetal liver tissue

Primary antibody: ml223147(SIAH1 Antibody) at dilution 1/300

Secondary antibody: Goat anti rabbit IgG at 1/8000 dilution

Exposure time: 1 minute



#### ELISA

Recommended dilution: 2000-5000

联系电话: 4008-898-798, 021-61725725

联系QQ: 2881505695, 2881505696

邮箱: [mlbio\\_cn@yeah.net](mailto:mlbio_cn@yeah.net)

网址: [www.mlbio.cn](http://www.mlbio.cn)