

Anti-SPRY4 antibody

Cat. No.	D223219
Package	25 µl/100 µl/200 µl
Storage	-20°C, pH7.4 PBS, 0.05% NaN ₃ , 40% Glycerol

Product overview

Description	Anti-SPRY4 rabbit polyclonal antibody
Applications	ELISA, WB, IHC
Immunogen	Full length fusion protein
Reactivity	Human, Mouse
Content	0.6 mg/ml
Host species	Rabbit
Ig class	Immunogen-specific rabbit IgG
Purification	Antigen affinity purification

Target information

Symbol	SPRY4
Full name	sprouty RTK signaling antagonist 4
Synonyms	HH17
Swissprot	Q9C004

Target Background

This gene encodes a member of a family of cysteine- and proline-rich proteins. The encoded protein is an inhibitor of the receptor-transduced mitogen-activated protein kinase (MAPK) signaling pathway. Activity of this protein impairs the formation of active GTP-RAS. Nucleotide variation in this gene has been associated with hypogonadotropic hypogonadism 17 with or without anosmia. Alternative splicing results in a multiple transcript variants.

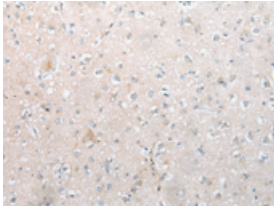
Applications

Immunohistochemistry

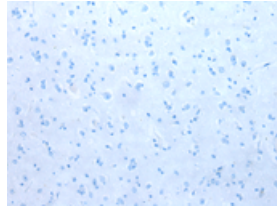
Predicted cell location: Cytoplasm

Positive control: Human brain

Recommended dilution: 10-50



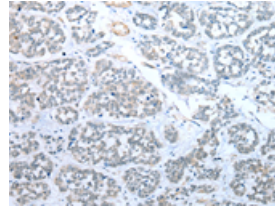
The image on the left is immunohistochemistry of paraffin-embedded Human brain tissue using ml223219(SPRY4 Antibody) at dilution 1/20, on the right is treated with fusion protein. (Original magnification: ×200)



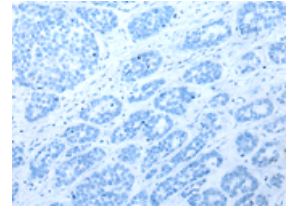
Predicted cell location: Cytoplasm

Positive control: Human esophagus cancer

Recommended dilution: 10-50



The image on the left is immunohistochemistry of paraffin-embedded Human esophagus cancer tissue using ml223219(SPRY4 Antibody) at dilution 1/20, on the right is treated with fusion protein. (Original magnification: ×200)



Western blotting

Predicted band size: 33 kDa

Positive control: Hela and Hepg2 cell, Mouse brain tissue

Recommended dilution: 200-1000

Gel: 8%SDS-PAGE

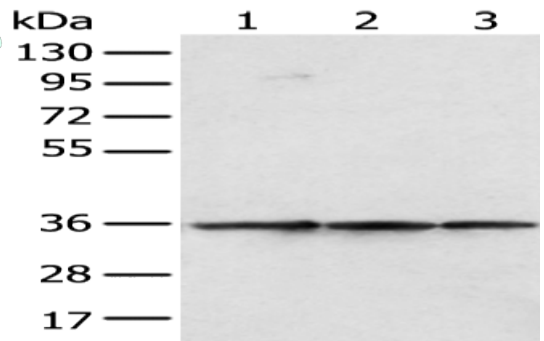
Lysate: 40 µg

Lane 1-3: Hela and Hepg2 cell, Mouse brain tissue

Primary antibody: ml223219(SPRY4 Antibody) at dilution 1/200

Secondary antibody: Goat anti rabbit IgG at 1/8000 dilution

Exposure time: 10 seconds



ELISA

Recommended dilution: 5000-10000

联系电话: 4008-898-798, 021-61725725

联系QQ: 2881505695, 2881505696

邮箱: mlbio_cn@yeah.net

网址: www.mlbio.cn